

Forget the spin columns and messy mag beads.
It's time for an upgrade.



KEY FEATURES

- Patented dispersive solid-phase extraction (dSPE) technology for higher recoveries in less time
- 96 samples in 30 mins or less
- Turnkey solutions and customized scripts provided for plug-and-purify workflows. *Just Click Go!*
- Confidential method development and technical support from expert scientists

Affinity Chromatography using IMCStips® with Protein A and Protein G resins

Unlike fixed-bed SPE devices, IMCStips contain loosely packed resins that mix with sample solutions during aspirate and dispense cycles, ensuring maximum contact between each resin and your analytes of interest.

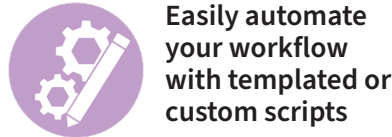
IMCStips containing resins immobilized with either Protein A, Protein G, or Protein A/G take advantage of these proteins' remarkable affinity for the Fc region of IgG antibodies. Coupled with our optimized protocol, this leads to the isolation of targets with high specificity and low non-specific binding.

Automation Platforms

IMCStips are compatible with a variety of automated liquid handling platforms, including Hamilton, Dynamic Devices, Tecan, and INTEGRA VIAFLO 96. Purify and isolate samples in as little as 30 minutes.



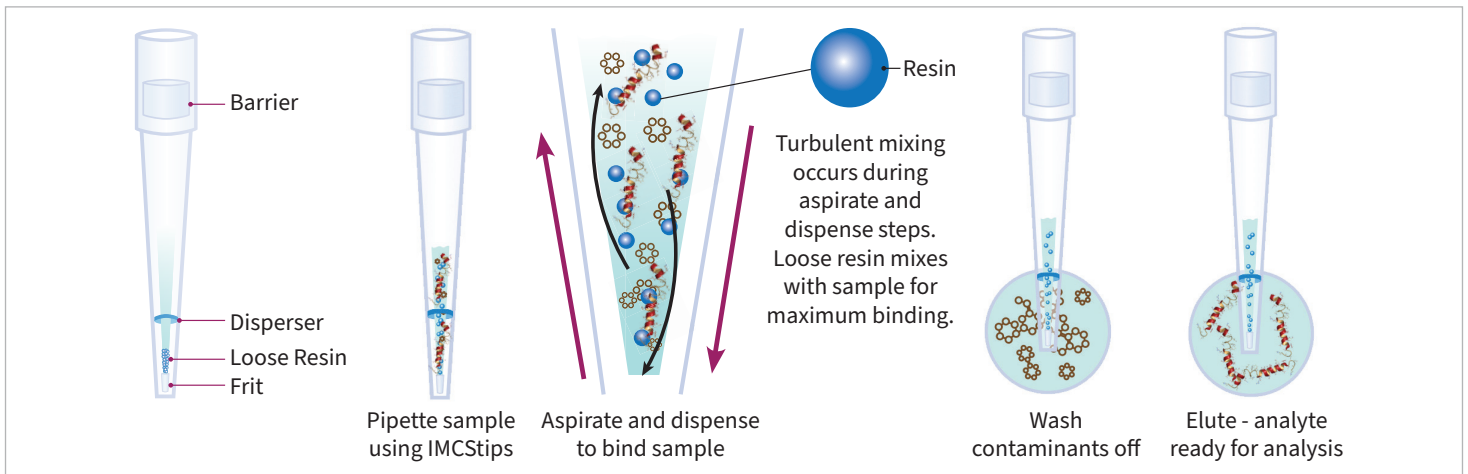
Higher Recoveries



Easily automate your workflow with templated or custom scripts



Consistent, high recoveries at the press of a button



Why Choose IMCStips?

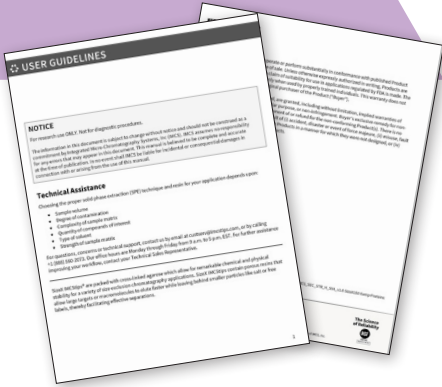
- Consistent, high recoveries
- Flexible sample volumes
- Customized applications
- Streamlined, automated workflow



View our **IMCStips Catalog** for a complete list of available resins

<https://imcstips.com/imcstips/catalog/>

We Make Automating Your Sample Preparation as Easy as *Just Click Go*



You need accurate results as fast, which is why we make implementing IMCStips easy for each of our customers. In addition to on-site or remote technical support, IMCStips come with scripts designed for various systems and automated liquid handling platforms. Our scientists create fully developed user guidelines that walk you through each step of testing and templated processes to allow for customized workflows that ensure seamless integration of IMCStips to your laboratory.

JUMP-START YOUR PROJECT

Get your new method running in **one week!**



Technical Discussion



IMCS Application Scientists create script



Script install & user guidelines provided



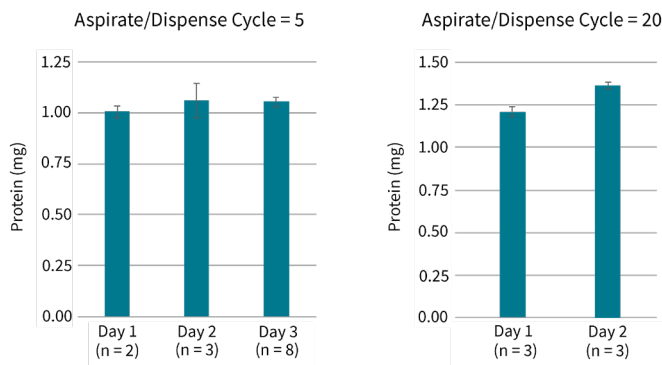
Test & validate new method



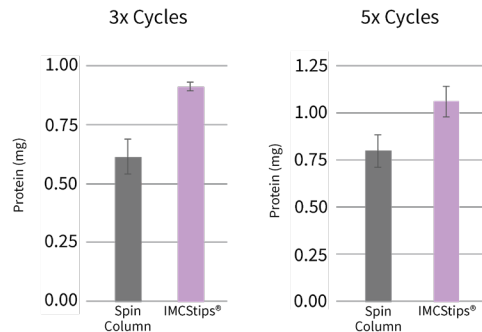
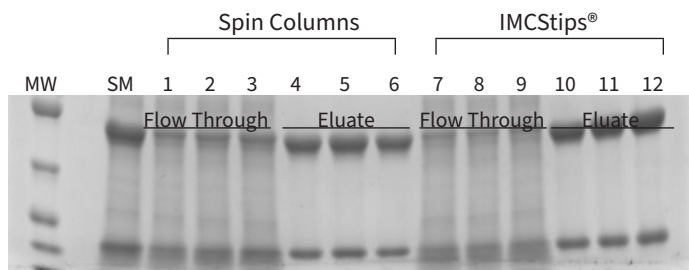
Relax while your application runs!

Automated Purification of IgG Antibodies using Protein A IMCStips®

Interday Reproducibility



The enrichment of IgG from different cell media were tested over 3 days using different numbers of tips and two different aspirate/dispense cycles.



Purification of a single lot of CHO cell fermentation using Protein A resin (50 μ L resin bed) by centrifugation (spin) and IMCStips. For consistency, the spin method utilized 100 \times g for five minutes and flow through samples were re-applied to the column either 3x or 5x, similar to the tip format. The spin columns yielded less IgG than IMCStips, as indicated by both UV-Vis measurements and by SDS-PAGE.

Contact us for a free sample of IMCStips®



imcstips.com/imcstips



+1 (888) 560-2073



inquiries@imcstips.com



Integrated Micro-Chromatography Systems, Inc.
110 Centrum Drive, Irmo, SC 29063 USA